



Price Guide



**Metropolitan
Memorial Parks**

Macquarie Park Cemetery
and Crematorium

MACQUARIE PARK CEMETERY AND CREMATORIUM

Acknowledges the traditional custodians of this land, the Gai-mariagal Darug people.
Water way | Lane Cove River, Turrumburra

Chapel and Cremation Services

Chapels fees below include the use of the chapel and a chapel commissioner for a 45 minute time period. A 15 minute interval is scheduled prior to each time period to allow for cleaning of chapels and funeral directors to set-up and discuss their service with the chapel commissioner.

Chapel and cremation services	
Monday to Friday (8.00am to 3.00pm)	\$1,372
Saturday (9.00am to 2.00pm)	\$1,968
Sunday (9.00am to 2.00pm)	\$2,553
Each additional 45 minutes - Monday to Friday	\$281
Twilight Services - Monday to Thursday 5.00pm*	\$1,895
Stillborn to 12 years - Monday to Friday (8.00am to 3.30pm)	No charge
<i>*6.00pm during Australian Daylight Savings Time.</i>	

Chapel service prior to a burial	
Monday to Friday (8.00am to 2.00pm#)	\$546
Saturday/Sunday (9.00am to 2.00pm)	\$995
Each additional 45 minutes - Monday to Friday	\$281
Each additional 45 minutes - Saturday/Sunday	\$523
<i>#3.30pm during Australian Daylight Savings Time.</i>	

Chapel only	
Monday to Friday (8.00am to 3.30pm)	\$601
Saturday/Sunday (9.00am to 2.00pm)	\$1,052
Each additional 45 minutes - Monday to Friday	\$281
Each additional 45 minutes - Saturday/Sunday	\$523

Levies are reviewed annually, each July, by the Cemeteries and Crematoria NSW Agency.
Prices are correct as of **1 July 2024** and are subject to change.

Other Fees

Cremation fees	
No service, no attendance	\$605
Additional fee if cremated on Saturday/Sunday	\$523
Cremation of exhumed remains	\$2,064
Each additional 15 minutes - Monday to Friday	\$574
Each additional 15 minutes - Saturday/Sunday	\$1,147
Other fees	
Witness insertion fee (must book prior to the service date)	\$456
Chapel service late fee (each additional 15 minutes)	\$253
Postage and packaging of cremated remains (Registered Post within Australia)	\$180
Postage and packaging of cremated remains (Registered Post outside Australia)	\$366
Sand and soil fill options	
Bottom and top lined with sand or premium soil	\$299
Bottom and half fill - sand and/or premium soil	\$596
Government levies	
Cremation (per)	\$45.10
Ash interment (per)	\$69.30

Levies are reviewed annually, each July, by the Cemeteries and Crematoria NSW Agency.
Prices are correct as of **1 July 2024** and are subject to change.

Additional Charges

Casket lifting device	\$461
Exhumation	\$10,278
Interment only - vaults/tombs/crypts	\$529
Burial licence ownership transfer fee	\$309
Vault interment transfers	\$686
Crane assisted lowering	\$880
Interment late fee - weekday after 3.00pm (each additional 15 minutes)	\$608
Saturday interment fee before 12.00pm	\$1,681
Saturday interment fee after 12.00pm to 3.00pm [^]	\$2,221
Sunday interment fee before 12.00pm	\$3,491
Sunday interment fee 12.00pm to 3.00pm [^]	\$4,611
Administration fee	\$309
Ash interment into existing grave	\$753
Witness backfill	\$309
[^] 4.00pm during Australian Daylight Savings Time.	

Levies are reviewed annually, each July, by the Cemeteries and Crematoria NSW Agency.
Prices are correct as of **1 July 2024** and are subject to change.

Ash Gardens

Memorial site	Pre-planned	Immediate need
Garden of Serenity, Garden of Reflection, Garden of Tranquillity, Garden of Memories, Blueberry Ash or RSL Wall	\$299	\$580
Garden of Tranquility		
Vase base niche A or I -one interment	\$1,125	\$1,676
Ash wall		
Red Gum General Niche Wall -one interment	\$1,631	\$2,182
Olive Grove		
Individual garden –one interment and plaque	\$2,080	\$2,080
Garden of Peace		
Individual niche -one interment	\$2,147	\$1,935
Rose garden		
Jewish Rose Garden -one interment	\$2,918	\$3,199
Garden of Serenity		
Inner circle rows E, F, G or H -one interment	\$6,112	\$6,663
Remembrance rocks		
Rockery of Reflection -one interment	\$3,536	\$4,087
Rockery of Reflection - two interments	\$4,560	\$5,618
Tanika Grove - two interments	\$7,950	\$8,501
Bush rock gardens		
Bush rocks - two interments	\$9,626	\$10,177
Small family estates - two interments	\$13,495	\$14,046
Medium family estate - four interments	\$19,522	\$20,073
Large family estate - six interments	\$29,418	\$29,969
Living Legacy Tree		
Tree, garden edging, Living Legacy treatment and two ash interments	\$16,318	\$16,869

Levies are reviewed annually, each July, by the Cemeteries and Crematoria NSW Agency.
Prices are correct as of **1 July 2024** and are subject to change.

Ash Gardens continued

New Granite Circle	Pre-planned	Immediate need
Small estate -includes four interments, four tablets and headstone	\$36,888	\$36,888
Large estate -includes six ash interments, six tablets and one headstone	\$45,888	\$45,888
Garden of Eternity		
Fountain of Hope or Fountain of Faith niche (fountain surrounds) - one interment	\$3,946	\$4,497
Fountain of Hope or Fountain of Faith niche (below ground) -one interment	\$4,496	\$5,047
Outer wall niche -one interment	\$4,560	\$5,618
Inner wall niche -one interment	\$4,560	\$5,618
Dragons of Virtue niche -one interment	\$5,066	\$5,618
Fountain of Hope or Fountain of Faith Garden estate- two interments	\$15,462	\$15,743
Dragons of Virtue garden estate - two interments	\$17,711	\$17,992
Fountain of Faith garden estate - three interments	\$19,836	\$20,117
Dragons of Virtue garden estate - three interments	\$22,085	\$22,366
Fountain of Hope or Fountain of Faith garden estate - four interments	\$24,333	\$24,614
Dragons of Virtue garden estate - four interments	\$26,582	\$26,863

Ash into grave and Jewish wall

Ash into grave	Pre-planned	Immediate need
Lawn sites for ashes – two Interments	\$6,100	\$7,157
Medium Lawn sites for ashes – four interments	\$8010	\$9067
Large Lawn sites for ashes – six interments	\$10,080	\$11,137
Ash into Granite Lawn grave		
Granite lawn sites for ash – two interments	\$7882	\$8939
Granite lawn site for ash – four interments	\$8090	\$9147
Granite lawn site for ash – six Interments	\$10,080	\$11,137
Jewish Niche Wall		
Please contact North Shore Temple Emanuel P: 9419 7011 E: info@nste.org.au		
Garden of Sleeping Angels (levy exempt)		
Mother and Child Sculpture -under 20 weeks gestation		\$939
Whale Baby Wall		\$889

Levies are reviewed annually, each July, by the Cemeteries and Crematoria NSW Agency.
Prices are correct as of **1 July 2024** and are subject to change.

Mausoleum of the Holy Way - Ash gardens

Mausoleum of the Holy Way - Amplis	Pre-planned	Immediate need
Gallery of Faith, Gallery of Peace or The Sacred Garden row A - two interments	\$5,825	\$5,825
Gallery of Faith, Gallery of Peace or The Sacred Garden row B - two interments	\$6,196	\$6,196
Gallery of Faith, Gallery of Peace or The Sacred Garden rows C or D - two interments	\$6,578	\$6,578
Gallery of Faith, Gallery of Peace or The Sacred Garden row E - two interments	\$5,431	\$5,431
Gallery of Faith, Gallery of Peace or The Sacred Garden row F - two interments	\$5,049	\$5,049
The Sanctuary row G - two interments	\$4,295	\$4,295
Mausoleum of the Holy Way - Dapsilis		
Gallery of Faith, Gallery of Peace or The Sacred Garden row A - two interments	\$6,972	\$6,972
Gallery of Faith, Gallery of Peace or The Sacred Garden row B - two interments	\$7,354	\$7,354
Gallery of Faith, Gallery of Peace or The Sacred Garden rows C or D - two interments	\$7,737	\$7,737
Gallery of Faith, Gallery of Peace or The Sacred Garden row E - two interments	\$6,589	\$6,589
Gallery of Faith, Gallery of Peace or The Sacred Garden row F - two interments	\$6,207	\$6,207
Mausoleum of the Holy Way - Magnus		
Gallery of Faith, Gallery of Peace or The Sacred Garden row A - three interments	\$8,726	\$8,726
Gallery of Faith, Gallery of Peace or The Sacred Garden row B - three interments	\$9,109	\$9,109
Gallery of Faith, Gallery of Peace or The Sacred Garden rows C or D - three interments	\$9,491	\$9,491
Gallery of Faith, Gallery of Peace or The Sacred Garden row E - three interments	\$8,344	\$8,344
Gallery of Faith, Gallery of Peace or The Sacred Garden row F - three interments	\$7,962	\$7,962

Levies are reviewed annually, each July, by the Cemeteries and Crematoria NSW Agency.
Prices are correct as of **1 July 2024** and are subject to change.

Mausoleum of the Holy Way - Ash gardens (continued)

Mausoleum of the Holy Way - Grandis	Pre-planned	Immediate need
Gallery of Faith, Gallery of Peace or The Sacred Garden row A - four interments	\$10,481	\$10,481
Gallery of Faith, Gallery of Peace or The Sacred Garden row B - four interments	\$10,863	\$10,863
Gallery of Faith, Gallery of Peace or The Sacred Garden rows C or D - four interments	\$11,245	\$11,245
Gallery of Faith, Gallery of Peace or The Sacred Garden row E - four interments	\$10,098	\$10,098
Gallery of Faith, Gallery of Peace or The Sacred Garden row F - four interments	\$9,716	\$9,716
Mausoleum of the Holy Way - Grandis+		
Gallery of Faith, Gallery of Peace or The Sacred Garden row F - four interments	\$10,109	\$10,109
The Sanctuary row G - four interments	\$9,344	\$9,344
Mausoleum of the Holy Way - Pool of Reflection		
Pool of Reflection - two interments	\$15,181	\$15,181

Government levies

Ash interment (per)		\$69.30
---------------------	--	---------

Burial Fees

Lawn	Pre-planned	Immediate need
Lawn site	\$11,987	\$13,044
Opening of existing grave purchased before 1 September 1998		\$2,412
Granite Lawn		
Granite lawn premium	\$20,731	\$21,788
Granite lawn standard	\$14,693	\$15,750
Monumental Lawn		
Lawn Monumental Single (includes granite headstone)		\$30,949
Lawn Monumental Double (includes granite headstone)		\$59,350
Stations of the Cross		
Stations of the Cross lawn site	\$17,115	\$18,543

Levies are reviewed annually, each July, by the Cemeteries and Crematoria NSW Agency. Prices are correct as of **1 July 2024** and are subject to change.

Burial Fees (continued)

Opening of an existing grave, plaque and crucifix		\$1,428
Monumental	Pre-planned	Immediate need
Catholic, Church of England, Baptist, Presbyterian, Unsectarian or SDA lawn site	\$15,867	\$15,867
Presbyterian Rows 8, 9, or 10 (piers and paths) lawn site	\$21,107	\$21,107
Opening of an existing grave purchased before 1 September 1998		\$2,412
Jewish		
Jewish Lawn Monumental (includes two interments, headstone and inscription with 70 letters)	\$19,510	\$19,510
Jewish Monumental (includes two interments)	\$17,829	\$17,829
Opening existing grave purchased before 1 September 1998 as a package with large plaque		\$3,469
Traditional monumental		
Traditional monumental site	\$26,410	\$26,410
Full Monumental		
Full monumental lawn site package (includes inscription with 70 letters and granite headstone)	\$49,476	\$49,476
Double full monumental lawn site package (includes inscription with 140 letters and granite headstone)	\$98,765	\$98,765
Opening of existing grave purchased before 1 September 1998		\$2,412
Garden of Sleeping Angels (levy exempt)		
Baby lawn site		\$1,726
Upgrade to granite headstone		\$691
Baby lawn premium site		\$2,968
Baby monument - angel or teddy (includes inscription with 70 letters)		\$4,329
Upgrade to giraffe or elephant		\$731
Government levies (babies exempt)		
Burial interment (per)		\$171.60

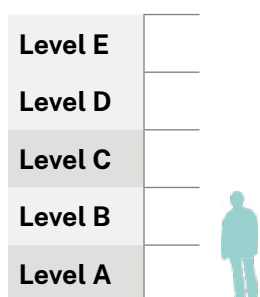
Levies are reviewed annually, each July, by the Cemeteries and Crematoria NSW Agency.
Prices are correct as of **1 July 2024** and are subject to change.

Mausoleum of the Holy Way Crypts and Family Vaults

Mausoleum of the Holy Way crypts	Pre-planned	Immediate need
Gallery of Devotion single - row E	\$30,480	\$30,480
Gallery of Faith, Gallery of Peace or Gallery of Devotion single - rows A or D	\$38,731	\$38,731
Gallery of Faith, Gallery of Peace or Gallery of Devotion single - rows B or C	\$46,671	\$46,671
Gallery of Devotion double - row E	\$60,961	\$60,961
Gallery of Faith, Gallery of Peace or Gallery of Devotion double - rows A or D	\$77,461	\$77,461
Gallery of Faith, Gallery of Peace or Gallery of Devotion double - rows B or C	\$87,235	\$87,235
Mausoleum of the Holy Way family vaults		
Vaults with 12 crypts	\$534,169	\$534,169

Crypt levels

Height guide



About the levels

Crypt levels A and B are accessible to touch based on the average height of 1.7m. Level C may be accessible by some. For your safety, ladders are not permitted or provided. The cost of level D is reduced to reflect this limited accessibility. Often touch plates are available in this instance.

Crypt configurations

Below is a guide to the types of crypts available.

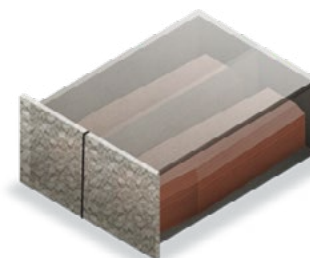
Single

For one casket/coffin.



Double

For two caskets/coffins arranged side by side.



Plaques

Double plaque (760x215mm)	\$2,114
Large plaque (sizes above 380mm)	\$1,057
Medium plaque (sizes larger than 150mm, smaller than 380mm)	\$551
Small plaque (sizes 150mm and smaller)	\$281
Proof for additional lines and lettering - third and subsequent proofs	\$14
Refurbish large plaque	\$399
Refurbish medium plaque	\$299
Refurbish small plaque	\$192
Standard ceramic photo - 3x4cm, 5x7cm, 6x8cm, 7x9cm	\$449
Standard ceramic photo - 8x10cm, 9x12cm, 10x13cm, 11x15cm, 13x18cm	\$591
Additional line of inscription bronze plaque	\$112
Additional standard motif for a bronze plaque	\$112
Non-English lettering per line	\$174
Stations of the Cross bronze vase	\$411

Inscriptions

Additional lettering per character	\$17
Non-English lettering under 2cm in height, per character	\$22
Non-English lettering between 2cm to 10cm in height, per character	\$40
Non-English lettering above 10cm in height, per character	\$270
Proof for additional lettering - Third and subsequent proofs	\$107
Granite vase	\$349
Granite incense burner	\$539
Granite cross (150mm in height) subject to approval	\$877
Standard cross motif	\$180
Monogram to headstone	\$349

All prices exclude Government levies. Prices effective from July 2024. All prices include GST. Prices are subject to change without notice, and are subject to terms and conditions.

Levies are reviewed annually, each July, by the Cemeteries and Crematoria NSW Agency.
Prices are correct as of **1 July 2024** and are subject to change.