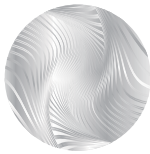




Fees and charges

Sandgate
Cemetery



Northern Cemeteries
Always

Always caring for the community in all its diversity

Acknowledgement of Country

In the spirit of reconciliation, Sandgate Cemetery acknowledges the traditional custodians of this land, the Awabakal People. The spirit of the Awabakal can be found across the region and we honour the memory of their ancestors.

These traditional homelands are ancient and sacred to the Awabakal who have a deep sense of belonging, both traditional and contemporary, because they are part of the world's oldest surviving, continuous living culture on the planet.



Our totem The Black Cockatoo

Totems are a natural object or creature that is believed to have spiritual significance and can be adopted by particular groups as an emblem or symbol.

They are distinguishable by their characteristic black plumage and distinctive call, and can have either very vivid red or yellow patches on their bodies.

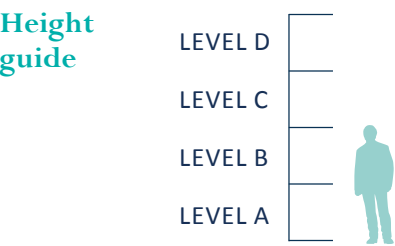
At Sandgate Cemetery we are frequently visited by the black cockatoo with the red feathers and local lore suggests that it can be the indication of rain.

The black cockatoo represents the power of spirit. It could represent a strengthening of your own spirit or soul, or a celebration of spirits or gods or higher power that people believe in. Black cockatoo energy tends to be celebratory and can bring about empowerment, happiness and contentment.

Burial

	Pre-planned	Immediate need
Monumental		
Monumental lawn site		\$3,037
Monumental (piers and paths)		\$3,211
Monumental lawn site - basic		\$1,574
Garden of the Innocents		\$928
Crypts		
Section C bottom row single - level A		\$24,127

Crypt levels



About the levels

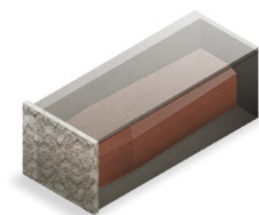
Crypt levels A and B are accessible to touch based on the average height of 1.7m. Level C may be accessible by some. For your safety, ladders are not permitted or provided. The cost of level D is reduced to reflect this limited accessibility. Often touch plates are available in this instance.

Crypt configurations

Below is a guide to the types of crypts available.

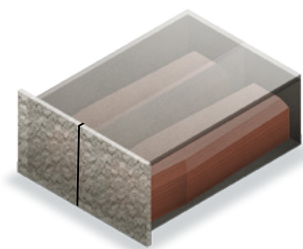
Single

For one casket/coffin.



Double

For two caskets/coffins arranged side by side.



Ash gardens

	Pre-planned	Immediate need
Ash Garden		
Ash Garden - one interment		\$1,146
Tanika Grove		
Remembrance rock - two interments	\$1,423	\$1,974
Remembrance rock - four interments	\$2,834	\$3,385
Rose Ash Garden		
Rose Ash Garden - one interment	\$2,856	\$3,407
Rose Ash Garden - two interments	\$5,718	\$6,820
Rose Ash Garden family estate - four interments	\$8,563	\$8,563*
Lawn Ash Sites		
Lawn ash family site - six ash interments	\$1,479	\$1,479
Garden of Angels		
Garden of Angels - one interment		\$625

**Price excludes stonemason inscription fees.*

Interment fees

Interment fees		
Adult		\$2,024
Child (one to twelve years)		\$978
Crypt		\$523
Ash interment into an existing grave		\$753
Ash internment into crypt		\$394

Additional charges

	Pre-planned	Immediate need
Additional charges		
Late fee (burials from 2:30pm)		\$501
Saturday interment fee		\$905
Saturday interment fee before 12.00pm		\$905
Saturday interment fee after 12.00pm		\$1,237
Concrete capping		\$377
Removal of concrete		\$377
Exhumation - body		\$10,278
Exhumation - ashes		\$1,018
Hire of chapel Monday - Friday (8.00am to 2.00pm)		\$157
Hire of marquee including table		\$112
Hire of marquee including 2 tables		\$169
Transfer/refund of burial licence		\$85
Administration fee		\$135
Crane assisted lowering		\$880

Plaques

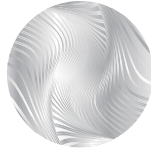
	Pre-planned	Immediate need
Plaques		
War Memorial (90x40mm)		\$299
Ash Garden (125x75mm)		\$230
Ash Garden plaque (125x75mm) and sloper package		\$281
Garden of the Innocents (65x70mm)		No charge
Ceramic photo 9x12cm		\$270
Ceramic photo 7x9cm		\$236
Ceramic photo 5x7cm		\$208
Government levies		
Burial - first interment		\$96.40
Burial - second/third interment		\$70.00
Ash interment		\$29.10

All prices exclude Government levies. Prices effective from July 2023. All prices include GST. Prices are subject to change without notice, and are subject to terms and conditions.

Sandgate Cemetery map



- | | | |
|--|--|--|
| ● CATHOLIC | ● CHINESE | ● CRYPTS |
| ● ANGLICAN (COE) | ● BAPTIST | ● GARDEN OF INNOCENTS |
| ● GREEK ORTHODOX | ● GENERAL AND LAWN CEMETERY | ● WAR CEMETERY |
| ● METHODIST | ● JEWISH | ● ASH MEMORIALS
Tanika Grove
Rose Ash Garden
Ash Garden |
| ● MACEDONIAN | ● ISLAMIC | ● OFFICE & MAINTENANCE |
| ● CONGREGATIONAL | ● SALVATION ARMY | |
| ● PRESBYTERIAN | | |



Sandgate
Newcastle

Sandgate Cemetery

116 Maitland Road, Sandgate NSW 2304

02 4968 3602 nmclm.com.au